

# Service Information

Tachographs, Telematics & Services

**To:** Technical managers / Service technicians

**SI-No.:** 1000009

**Subject:** DTCO 4.1 Retrofit Instructions

**07.03.2024**

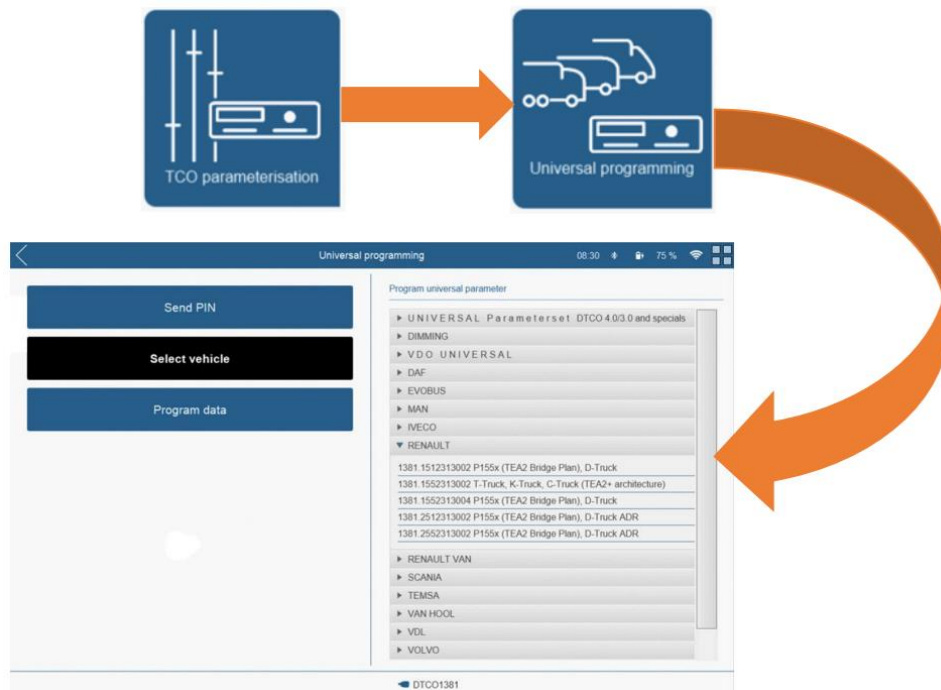
**Page: 1**

The service information note is to explain how to perform a DTCO 4.1 retrofit, with the support of Flexible Universal Programming (FUP).

Since the 21st February 2024, a 'full' smart tachograph 2 or 'transitional' smart tachograph 2 must be fitted into all newly registered in-scope vehicles regardless of journey types ie. National or International.

From the 31st December 2024, any 'in-scope' vehicle that performs International journeys and is currently fitted with an analogue or an Annex 1B ('non-Smart') tachograph system must have the tachograph system replaced with a Smart Tachograph version 2 (G2V2).

There can be technical difficulties when replacing older model tachographs with newer ones. When using a Universal Tachograph as the replacement unit, it is necessary to program the new tachograph to the vehicle. This can be performed using Universal Programming in the Workshop Tab.



Continental Automotive Trading UK Ltd  
36 Gravelly Industrial Park  
Birmingham  
B24 8TA

[uk@vdo.com](mailto:uk@vdo.com)  
Tel: 0121 725 1234

VDO – A Trademark of the Continental Corporation

**VDO**

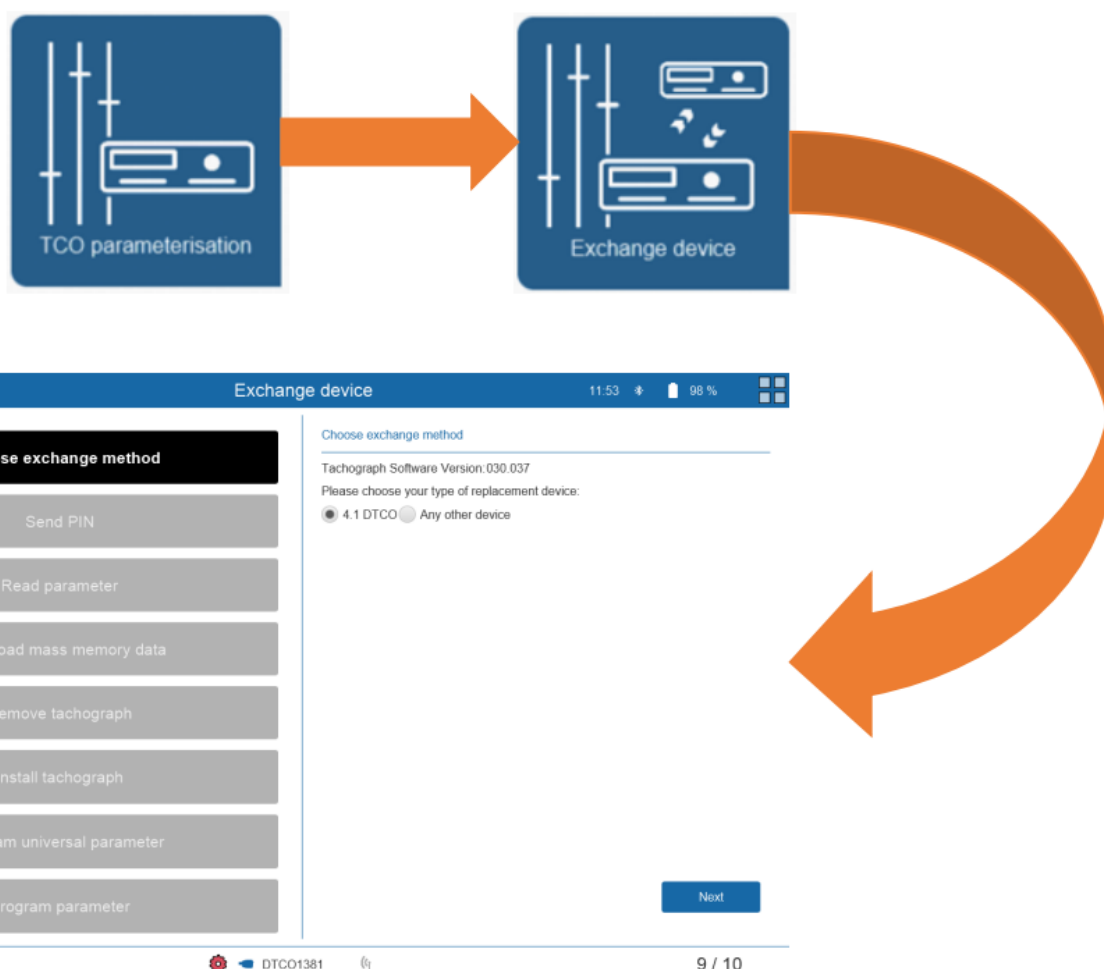
However, due to advances in vehicle technology, the current parameter sets may not be compatible with older vehicles. To assist in overcoming compatibility issues that may occur with these retrofits, Continental/VDO have developed Flexible Universal Programming (FUP) in the Workshop Tab.

This requires the WTab to have minimum of v4.10 software and the License Feature Package 4.10 (item number: 2910003247100). This update is essential for retrofitting the tachographs DTCO 2.0-4.0 with DTCO 4.1.

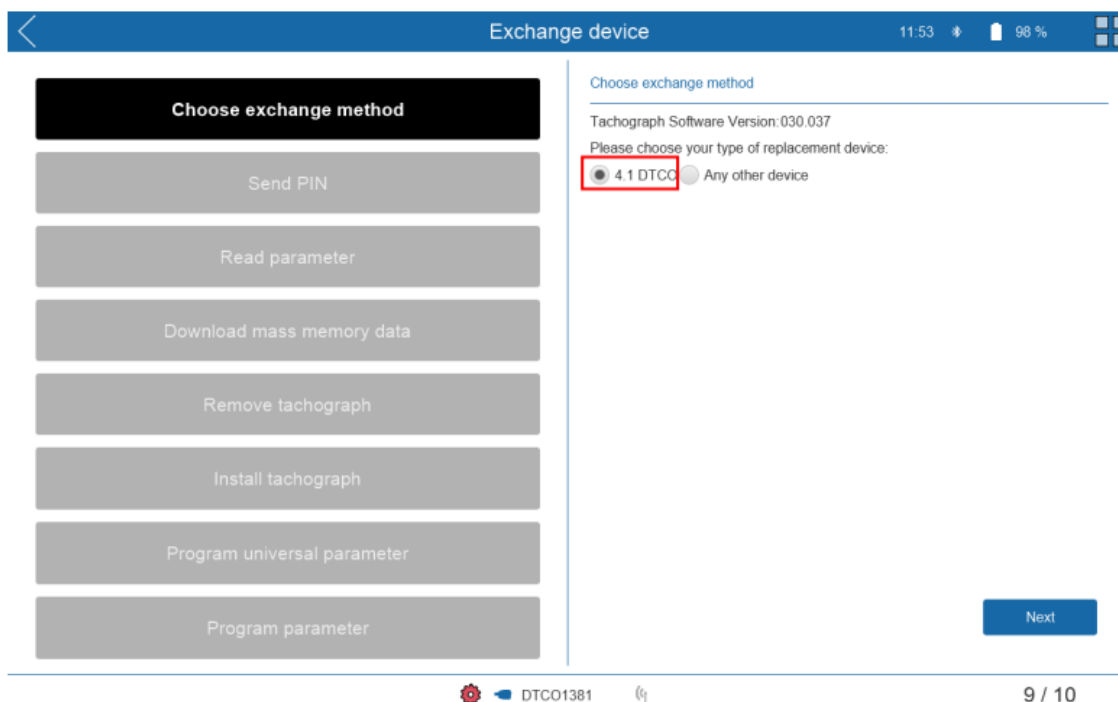
### **Flexible Universal Programming (FUP)**

Flexible Universal Programming currently allows all vehicles with a DTCO 2.0 to 4.0 to be retrofitted to DTCO 4.1. It transfers and converts relevant parameters from the old tachograph to the new DTCO 4.1, so no additional adjustments are necessary. The function is accessed via Parameterisation and Exchange Device.

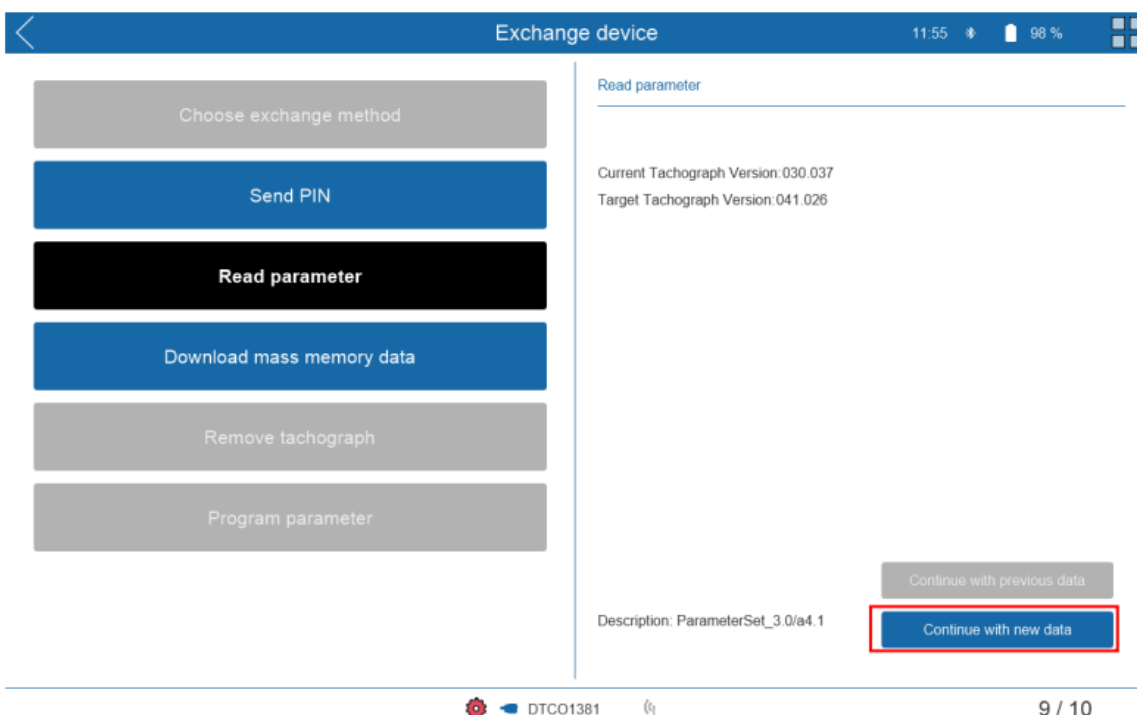
#### **Using Exchange Device:**



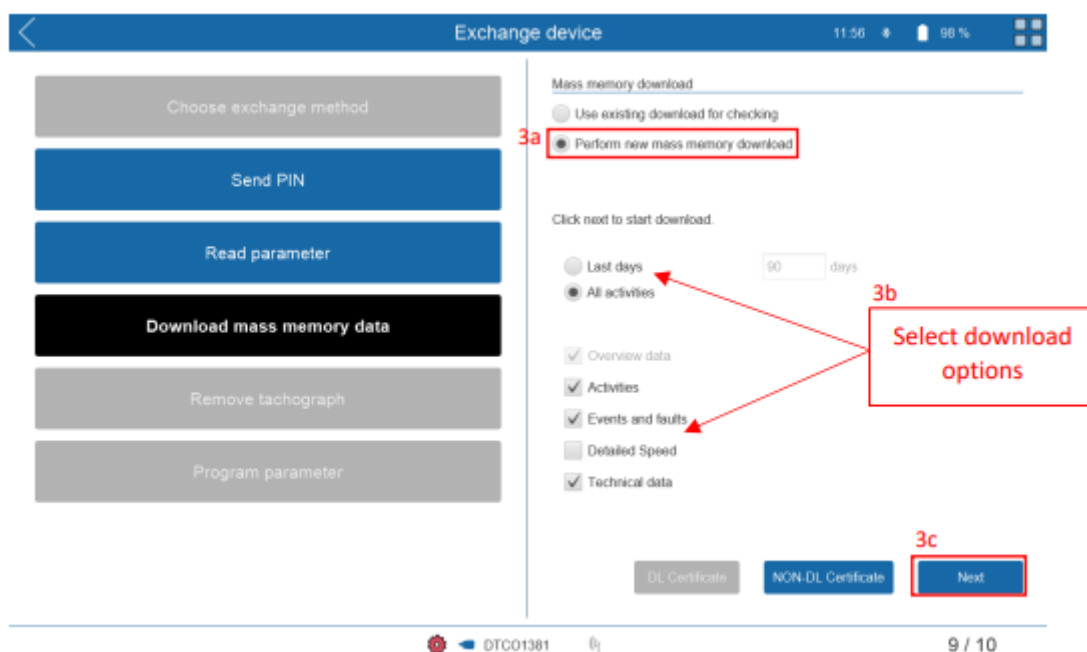
1. Select retrofit (e.g. DTCCO X.X to DTCCO 4.1) or standard replacement (e.g. DTCCO 3.0 to 3.0). The screen below shows a retrofit to DTCCO 4.1 selected.



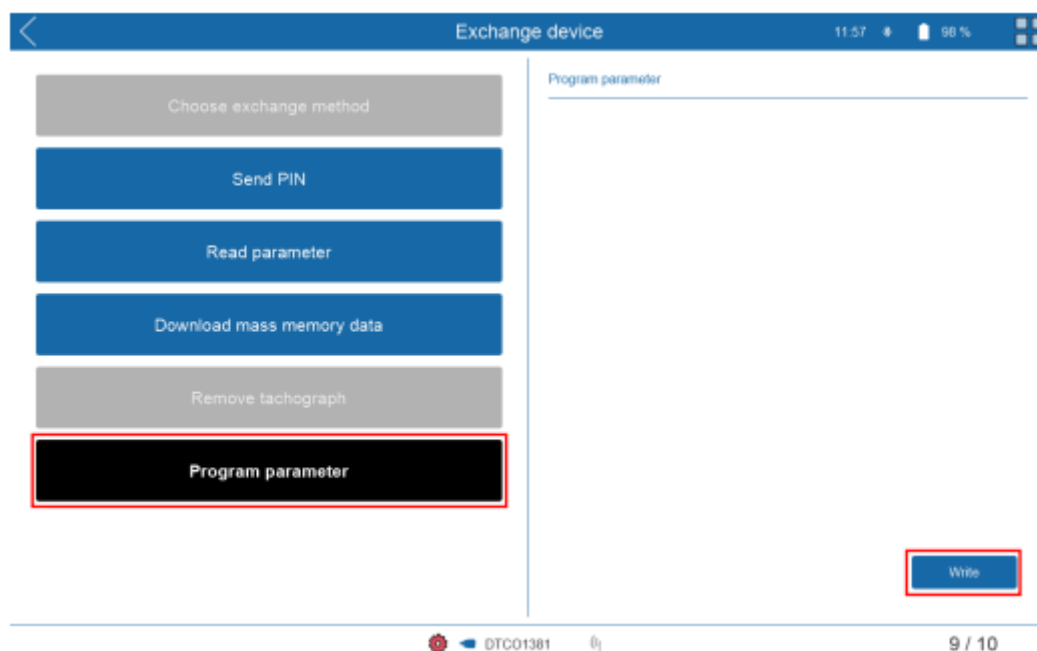
2. Send Workshop Card PIN to DTCCO (if you haven't already done so) and read parameters of the old DTCCO to the Workshop Tab. To do this, select the "Continue with new data" button.



3. Before removing the old DTCO, back up (download) the data from the old tachograph via Mass Memory download. This is a legal requirement under DVSA rules.



4. Install the new DTCO 4.1 into the vehicle and transfer the parameters from the Workshop Tab to the new tachograph.



5. The replacement of the DTCO is then completed.

In future, this process may be integrated into the Calibration Wizard.

For retrofitting DTCO 4.1 in older vehicles (fitted with DTCO 1.4 or earlier, or analogue systems) or when the tachograph parameters cannot be read via Exchange Device, please contact Continental/VDO Support:

- Tel: 0121 725 1313
- Email: [tacho-support@continental-corporation.com](mailto:tacho-support@continental-corporation.com)

### **Additional Considerations**

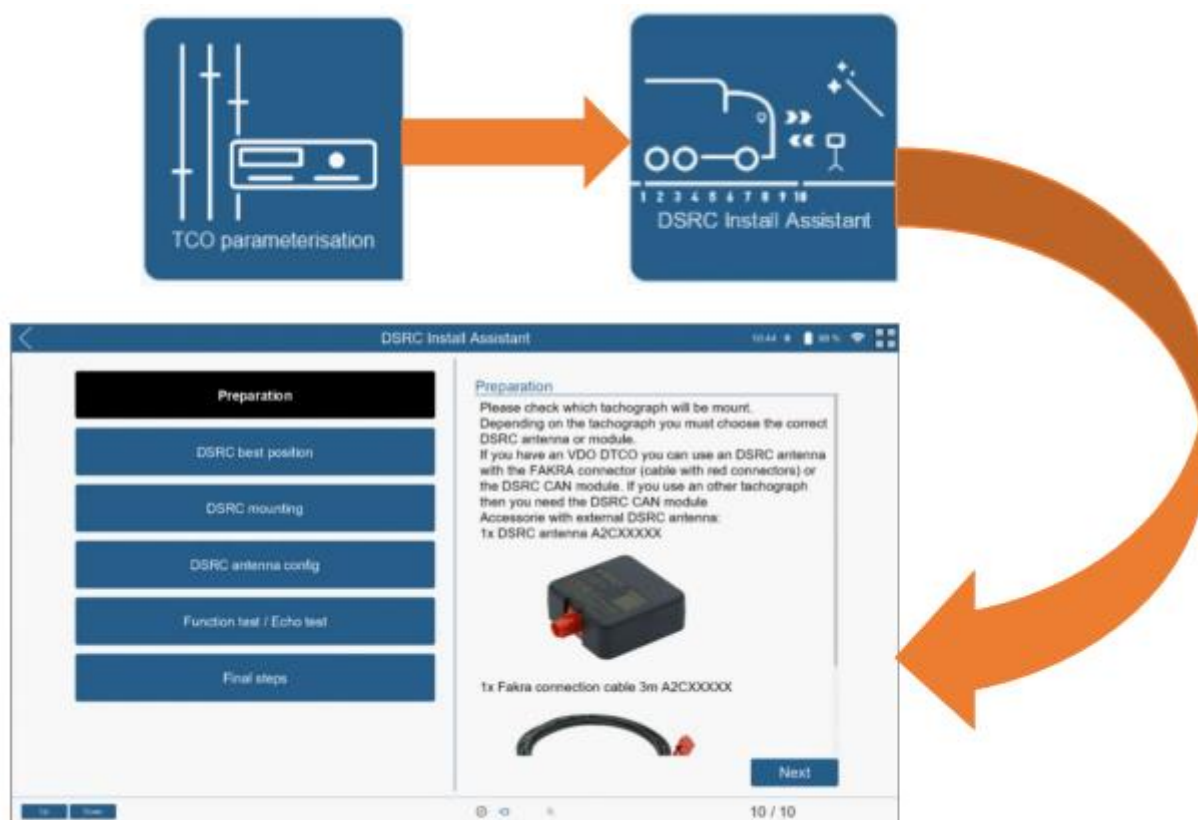
In addition to changing the DTCO a new sensor must be installed and a DSRC module/antenna must be fitted.

### **Sensor**

A KITAS 4 (2185) or equivalent sensor must be used with a Smart tachograph.

### **DSRC Installation Wizard**

If an Analogue or Annex 1b tachograph is retrofitted with a new DTCO 4.1, a DSRC antenna or module must also be mounted. The DSRC Installation Assistant within the Workshop Tab guides the user through the entire process.



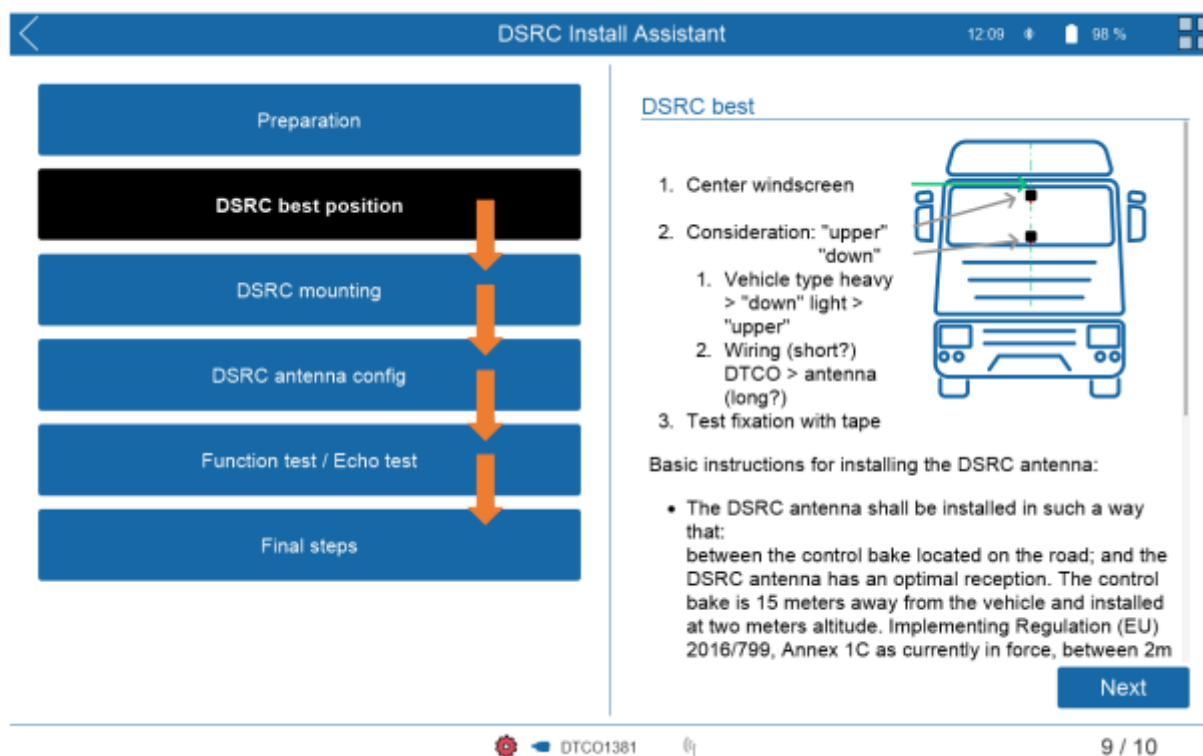
Continental Automotive Trading UK Ltd  
36 Gravelly Industrial Park  
Birmingham  
B24 8TA

[uk@vdo.com](mailto:uk@vdo.com)  
Tel: 0121 725 1234

VDO – A Trademark of the Continental Corporation

**VDO**

Follow the DSRC Install Assistant through 'step-by-step' by selecting each of the functions in turn or by using the Next button on each screen. At the end of the process, a functional test is carried out to verify the correct installation of the DSRC module or antenna. A detailed report is generated, which serves as documentation of the retrofit.



Please note that the Stoneridge DSRC module on a Smart Tachograph Version 1 is not compatible with a Smart Tachograph Version 2. As the Stoneridge RTM/DSRC module is separate to the tachograph, being combined with the antenna, if the tachograph is updated to SMART Tachograph Version 2, the Stoneridge RTM/DSRC module must also be upgraded or replaced.

To identify a Stoneridge Smart 2 DSRC module, the certificate number can be checked: 900620C. A production Smart 2 module is marked with a Rxx number equal or above:

	VAR:	REV:
OEM	21	R07
OEM	22	R08
OEM	25	R08
OEM	26	R06
OEM	31	R04
OEM	32	R04
OEM	35	R04
AM	11	R12
AM	40	R07
AM	41	R05

Continental Automotive Trading UK Ltd  
36 Gravelly Industrial Park  
Birmingham  
B24 8TA

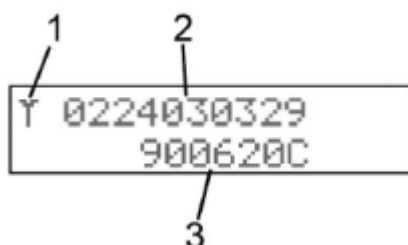
[uk@vdo.com](mailto:uk@vdo.com)  
Tel: 0121 725 1234

VDO – A Trademark of the Continental Corporation

**VDO**

To access the DSRC certificate number, on the tachograph, scroll through to the INFO menu and press Enter. Then scroll through the screen to the DSRC Display (see below).

DSRC display



1. DSRC pictogram
2. DSRC extended serial number
3. DSRC certification number

On the module itself, the Variant / Revision can be found as shown below:



G2V1

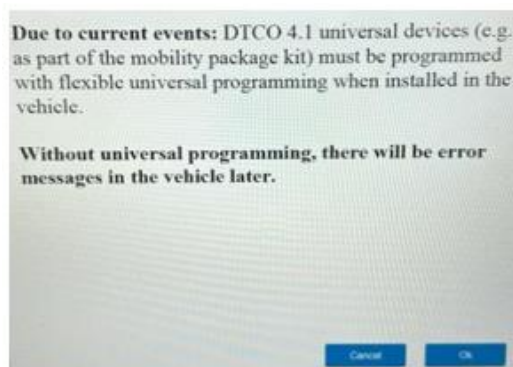


G2V2

### Should you fit an OEM or Universal DTCO?

There have been reports that, in some vehicle makes, only OEM tachographs can be used for retrofitting. In our experience, if the Flexible Universal Programming is used, Universal DTCO 4.1 can be used for retrofitting.

A pop-up message appears on the Workshop Tab advising technicians to use Flexible Universal Programming.



Continental Automotive Trading UK Ltd  
36 Gravelly Industrial Park  
Birmingham  
B24 8TA

[uk@vdo.com](mailto:uk@vdo.com)  
Tel: 0121 725 1234

VDO – A Trademark of the Continental Corporation

**VDO**